

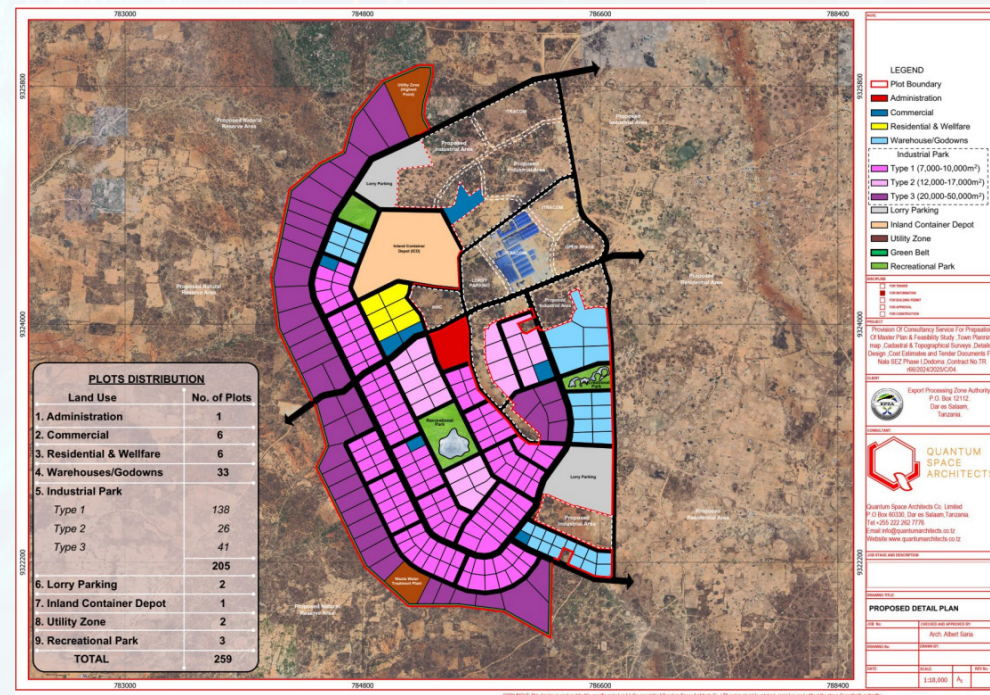
About NALA SEZ

Dodoma's central location positions it strategically close to several regional and international markets. With improved infrastructure like the Standard Gauge Railway (SGR) and national road networks, goods and services can move efficiently to: **Zambia and Malawi** through the Tunduma border via the Central Corridor, **Democratic Republic of Congo (DRC)** via Kigoma Port on Lake Tanganyika, **Rwanda and**

Investment Sectors:

- i. Agriculture value addition
- ii. Fast-Moving Consumer Goods (FMCG)
- iii. Textiles and clothing
- iv. Pharmaceuticals
- v. Motor vehicle manufacturing and assembly
- vi. Motor vehicle spare parts
- vii. Paper products and packaging materials
- viii. Rubber and rubber products
- ix. Engine assembly (vehicles, boats, tractors, motorcycles)
- x. Simple machinery
- xi. Solar panels, batteries, and green technologies
- xii. Household appliances and electronics
- xiii. Wood products, furniture, and building materials

NALA SEZ Layout Map



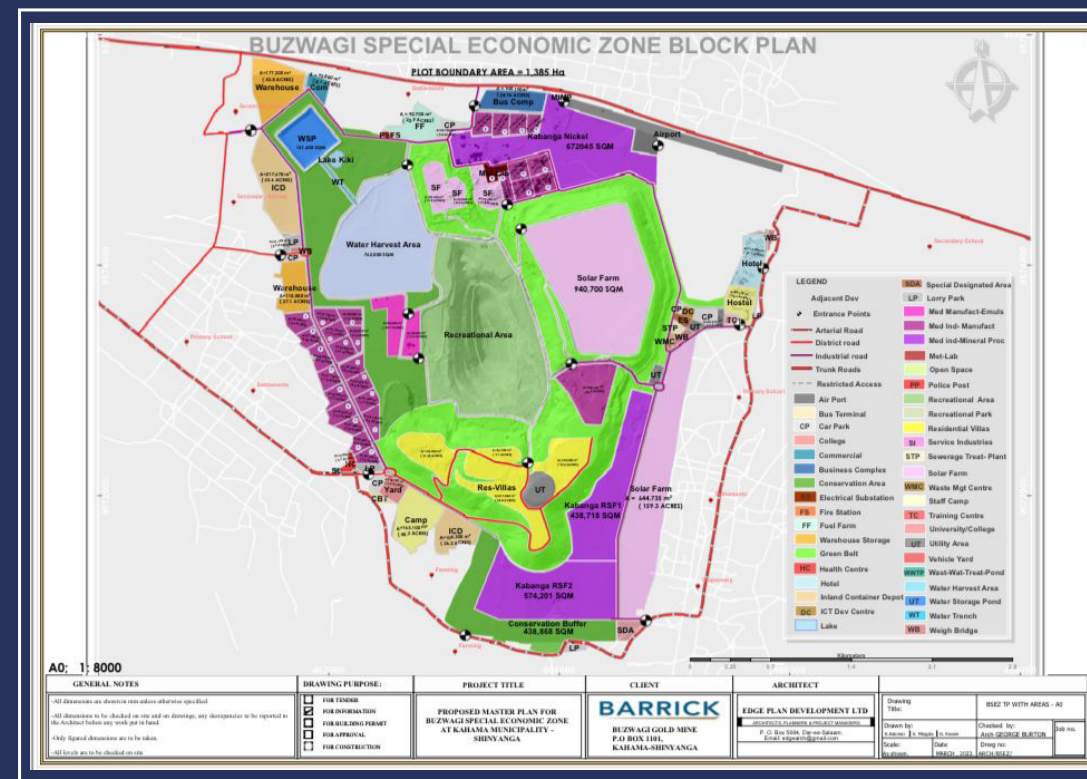
About Buzwagi SEZ

The Buzwagi SEZ is located at an old Buzwagi Gold Mine site within Kahama District in Shinyanga Region. It's 30 kilometres from Isaka Dry Port and approximately 260 kilometres away from Mwanza airport . Buzwagi SEZ is connected through highway tarmac road from Dar Es Salaam Port. Buzwagi SEZ has its own operating airport with a 1.5 kilometres runway with a terminal building holding capacity of 250 passengers including VVIP Lounge.

In this project, TISEZA targets to attract high value manufacturing and commercial projects in the key activities such as;

- i. Mineral Value addition
- ii. Manufacturing (Agro and Livestock Processing, Motor Vehicles manufacturing and assembly)
- iii. Renewable Energy

Buzwagi SEZ Layout map

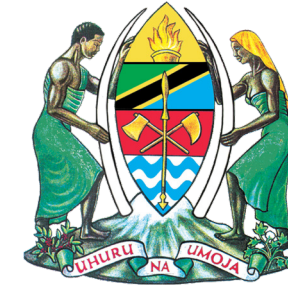


Application forms available at www.tiseza.go.tz or Visit us at

**TISEZA Lake Zone at
Maji House, 5th Floor, Balewa
Road, Isamilo Area
MWANZA**

**TISEZA Southern Highlands
Zone at
NBC Building, Karume Avenue
MBEYA**

**TISEZA Nyasa Zone at
Regional Commissioner's
Office
NJOMBE**



Invest in Tanzania

Africa's New Manufacturing HUB

Tanzania Investment and Special Economic Zones Authority

TISEZA



Available Investment Spaces

Key Investment Incentives Package for projects per Market Segment

Projects Targeting Local and EAC Markets	Projects Targeting SADC, AfCFTA, International -US, Europe, Asia etc.
<ul style="list-style-type: none">Free project land;Plant and Machinery VAT and duty free;Raw materials duty free;Goods of Capital Nature may enjoy 75% reduction in dutyPre-fabricated factory buildings-75% reduction in duty;Distribution truck tractors-75% reduction in duty;Building permits issued within 24 Hours;All licenses and permits to be procured hassle free at TISEZA Premier investors' service centre;TISEZA Regional market access support to connect investors with buyers and distributors in EAC and SADC countries; andTISEZA officers stationed at all Regional and main ports of exit to facilitate cross boarder transit processes	<ul style="list-style-type: none">Free project land;Plant and Machinery VAT and duty free;Raw materials duty and VAT free;10 years Corporate Income Tax exemption;VAT and Import duty exemption on Goods of Capital Nature;VAT and import duty exemption on pre-fabricated Factory Buildings;VAT and import duty exemption on specialized utility vehicles specific to project;VAT exemption on services and utilities including electricity, water, port handling etc;Withholding tax exemption on services, dividends and interest on foreign bank loans;Building permits issued within 24 Hours;All licenses and permits to be procured hassle free at TISEZA Premier investors' service centre;TISEZA market access support by connecting with buyers and distributors globally; andTISEZA officers stationed at all Regional and main ports of exit to facilitate cross boarder transit processes

Key Application Criteria

- Local content requirement of at least 30% Tanzanian ownership;
- Optimised land use limited to a maximum of one (1) Acre per factory
- Commencement of factory operations within 12 months period;
- Minimum Investment commitment of at least \$10 million USD with 25% advance capital deposit in a local bank for foreigners
- Minimum Investment commitment of at least \$ 5 million USD with 25% advance capital deposit in a local bank for Tanzanian
- Employment creation target of at least 100 direct payroll jobs

BAGAMOYO ECO MARITIME CITY (BEMC)

About Bagamoyo SEZ

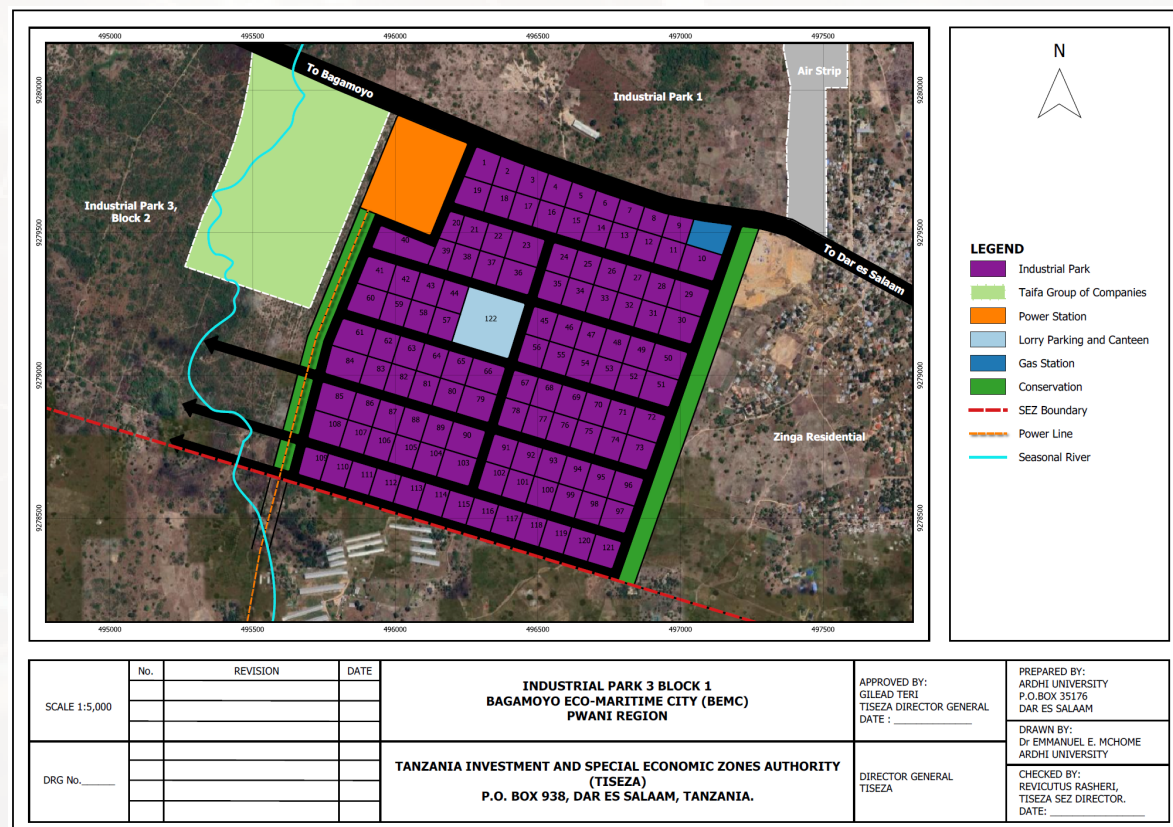
Tanzania Investment and Special Economic Zones (**TISEZA**) in its determination to transform Tanzania into the **New HUB for manufacturing in Africa**, has demarcated suitable land approximately 151 hectors for industrial use also known as Bagamoyo Eco Maritime City (BEMC) Phase I Industrial Park project located in Zinga Bagamoyo area.

The BEMC Phase I project site at Industrial Park 3 Block 1 with 134 plots is only 45 kilometres away from Dar es Salaam Port and is easily accessed through Bagamoyo highway tarmac road and to the proximity with the to be the regional major (Mbegani Bagamoyo) port currently under initial development.

This area is well linked to the proposed power substation, gas station and adjacent to proposed railway line linking the Proposed Bagamoyo Port and Central Railway Line (SGR & MGR) and Tanzania – Zambia Railway (TAZARA)

Allocated specific for textile, pharmaceuticals, automotive sectors & Regional Head Quarter offices

Bagamoyo SEZ-Industrial Park 3 Block 1 Layout Map



KWALA SEZ

About Kwala SEZ

Tanzania Investment and Special Economic Zones (**TISEZA**) has demarcated suitable land approximately 100 hectares known as KWALA SPECIAL ECONOMIC ZONE in Kibaha , Coastal region. The Kwala Special Economic Zone borders Kwala Dry Port. Kwala SEZ Is well connected and linked to Dar es Salaam port by Railway (both Standard gauge and Meter Gauge railways) and tarmacked road (Tanzam Highway/ DarMorogoro highway) to ease congestion at Dar es Salaam port and serve landlocked neighbours such as Uganda, Rwanda, DRC, Zambia, and Malawi

Ideal for investments in agro-processing, consumer goods, and a wide range of manufacturing industries, including green technologies

Investment Sectors:

- Agriculture value addition
- Fast-Moving Consumer Goods (FMCG)
- Textiles and clothing
- Pharmaceuticals
- Motor vehicle manufacturing and assembly
- Motor vehicle spare parts
- Paper products and packaging materials
- Rubber and rubber products
- Engine assembly (for vehicles, boats, tractors, motorcycles)
- Simple machinery manufacturing
- Solar panels, batteries, and green technologies
- Household appliances and electronics
- Wood products, furniture, and building materials

Kwala SEZ Layout Map

